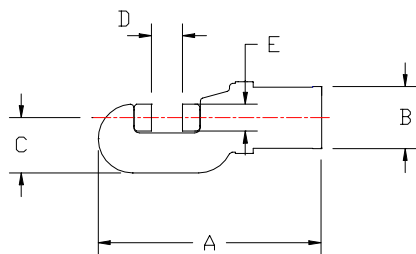




Hydraulic Rod & Bar Shears

Here are the 8 features that make Vale Shears the standard for the industry:

1. Mill-type BOLTED CAP CONSTRUCTION for easy maintenance.
2. SUPER SEALING, with only TEFLON parts touching the cylinder bore.
3. BRONZE-FILLED TEFLON WEAR RING prevents piston from touching cylinder bore.
4. ALL STEEL SUSPENSION RING for maximum safety.
5. AXIAL RAM GUIDE KEY for more accurate blade cuts.
6. SINGLE SPRING CONSTRUCTION for longer life.
7. HIGH STRENGTH BRONZE RAM BUSHING.
8. ALLOY STEEL HEAT-TREATED and HARD PLATED single piece ram and piston for simplicity and accuracy. Requires one less seal.



Vale gives you even more:

- TWIST LOCK electrical connector with BOOT PROTECTOR.
- HEAVY DUTY trigger type switch, 15 AMP rated.
- HIGH STRENGTH ALUMINUM switch handle with integral trigger guard for greater safety.
- Heavy-walled cylinder, 4,500PSI working pressure with 4 to 1 SAFETY FACTOR.
- HIGH STRENGTH ALLOY heat treated "C" frame.

MODEL	CAPACITY DIA.	SHEAR STRENGTH PSI @	BLADE #	WEIGHT LB.	DIM A In"	DIM B In"	DIM C In"	DIM D In"	DIM E In"
V10-C1539	0.62	60,000	A-1502	17.0	9.96	3.0	2.68	0.75	1.19
V15-D1507	0.81	60,000	A-1502	23.0	10.52	3.93	2.68	0.88	1.19
V35-D1508	1.25	55,000	A-1502	50.0	12.62	5.68	3.07	1.33	1.19
V70-D1509	1.62	60,000	A-1503	121.0	16.41	7.75	4.88	1.81	1.75
V90-D1570	2.00	60,000	A-1501	268.0	24.00	9.00	7.25	2.25	2.25
V135-D1708	2.50	60,000	A-3716	600.0	31.00	12.38	10.00	2.75	2.75
V250-D1510	1.81	20,000	A-1731	75.0	18.75	5.18	4.62	2.62	2.25
V350-D1511	2.50	20,000	A-1505	131.0	24.00	5.68	6.12	3.50	2.75
V700-D1512	3.00	20,000	A-1506	269.0	30.76	7.75	7.50	4.50	3.50
V900-D1600	3.50	20,000	A-1920	454.0	37.47	9.00	9.75	5.50	5.00

NOTE: See Bulletin 170 for cycle times. All information subject to change without notice.

Corporate Headquarters

Vale Industries Inc.
 122 Simonds Ave.,
 DeKalb, Illinois 60115-3992
 Phone: (815) 756-2426
 Fax: (815) 756-2735
 E-mail: info@vale-industries.com
www.vale-industries.com

International Division

Vale Industries Inc.
 115 S. 4th Avenue.
 St. Charles, Illinois 60174-2145
 Phone: (630) 584-1900
 Fax: (630) 584-2599