



## Square Cut Shears (Metric Information)

**For neat, square cuts here are the 8 features that make Vale Shears the standard for the industry:**

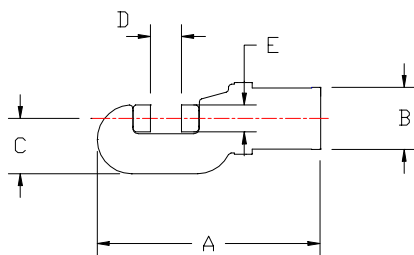
1. Mill-type BOLTED CAP CONSTRUCTION for easy maintenance.
2. SUPER SEALING, with only TEFLON parts touching the cylinder bore.
3. BRONZE-FILLED TEFLON WEAR RING prevents piston from touching cylinder bore.
4. ALL STEEL SUSPENSION RING for maximum safety.
5. AXIAL RAM GUIDE KEY for more accurate blade cuts.
6. SINGLE SPRING CONSTRUCTION for longer life.
7. HIGH STRENGTH BRONZE RAM BUSHING.
8. ALLOY STEEL HEAT-TREATED and HARD PLATED single piece ram and piston for simplicity and accuracy. Requires one less



Normal "Pinch" Cut



Square Cut



### Vale gives you even more:

- TWIST LOCK electrical connector with BOOT PROTECTOR.
- HEAVY DUTY trigger type switch, 15 AMP rated.
- HIGH STRENGTH ALUMINUM switch handle with integral trigger guard for greater safety.
- Heavy-walled cylinder, 310 BAR working pressure with 4 to 1 SAFETY FACTOR.
- HIGH STRENGTH ALLOY heat treated "C" frame.
- FOUR SHEARING EDGES on each blade for maximum life.

MODEL	CAPACITY DIA.	SHEAR STRENGTH BAR @	BLADE #	WEIGHT Kg.	DIM A mm	DIM B mm	DIM C mm	DIM D mm	DIM E mm
V15SC-D1685	20.57	4137	A-3013	20.0	282	100	78	22	28
V35SC-D1580	31.75	3792	A-1750	33.0	394	144	127	35	41
V70SC-D1652	41.27	4137	A-2731	107.0	530	197	149	49	51

**NOTE:** See Bulletin 170 for cycle times. All information subject to change without notice.

#### Corporate Headquarters

Vale Industries Inc.  
 122 Simonds Ave.,  
 DeKalb, Illinois 60115-3992  
 Phone: (815) 756-2426  
 Fax: (815) 756-2735  
 E-mail: [info@vale-industries.com](mailto:info@vale-industries.com)  
[www.vale-industries.com](http://www.vale-industries.com)

#### International Division

Vale Industries Inc.  
 115 S. 4<sup>th</sup> Avenue.  
 St. Charles, Illinois 60174-2145  
 Phone: (630) 584-1900  
 Fax: (630) 584-2599